



Massachusetts Department of Public Health

MDPH Tuesday Infectious Disease Webinar Series

Tools for Local Boards of Health

April 8, 2025

Hillary Johnson, MHS

Senior Epidemiology Advisor to Local Health, Division of Epidemiology

Scott Troppy, MPH, PMP

Senior Epidemiologist – MAVEN User Management & Data Visualization Lead

Petra Schubert, MPH

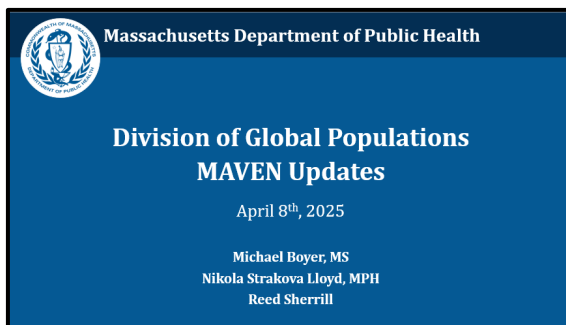
Emerging Infections Coordinator, Division of Epidemiology

Julie Coco, MPH

Internship Program and Training Coordinator, Division of Epidemiology

Lionel White, MSIT

Senior Surveillance Research Analyst, MAVEN Training Team



April 8, 2025

- General Updates
- 2025 Immunization Updates Webinar Series Dates Announced!
- Morbidity Updates (Measles, HPAI)
- MAVEN Case Close Out Project
- **Featured Presentation:** Division of Global Populations, TB MAVEN Updates
 - Michael Boyer, MS
 - Nikola Strakova Lloyd, MPH
 - Reed Sherrill

MASSACHUSETTS ACTUALLY HAS 12 SEASONS. Where we are currently:

~~Winter~~
~~Fool's Spring~~
~~Second Winter~~
~~Spring of Deception~~
Third Winter ← **MONDAY**
The Pollening
Actual Spring
Summer
Hell's Front Porch
False Fall
Second Summer
Actual Fall

Infectious Disease Tools for LBOH Webinar Schedule!

2025 Upcoming Schedule!

All Registrations:	http://tinyurl.com/MAVEN-Webinars
2 nd Tues 4/8/25	Tuberculosis 2025
4 th Tues 4/22/25	4 th Tuesday Office Hours
2 nd Tues 5/13/25	Viral Hepatitis
	<i>No May Office Hours</i>
2 nd Tues 6/10/25	Arbovirus Season
4 th Tues 6/24/25	4 th Tuesday Office Hours
2 nd Tues 7/8/25	Enteric Diseases (Foodborne)
4 th Tues 7/22/25	4 th Tuesday Office Hours

WEBINAR REGISTRATION PAGE:

<http://tinyurl.com/MAVEN-Webinars>

- You help us identify topics, needs, & content!
- Be sure to send ideas, requests, and questions to Hillary and Scott!

MAVEN Help has Guidance Documents and Previous Webinars:

<http://www.maven-help.maventrainingsite.com/toc.html>



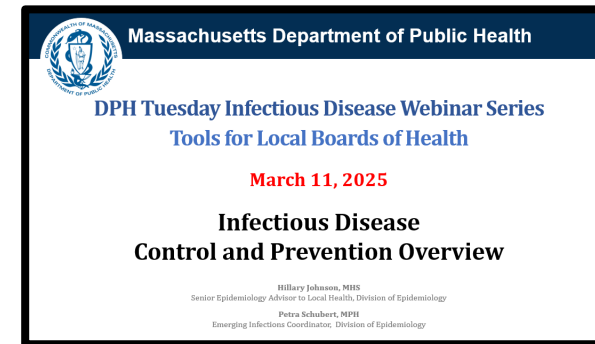
You can always contact
mavenhelp@mass.gov or
The MDPH Epi Program
at 617-983-6800 with
specific questions.

Next Office Hours
Tuesday, April 22, 2025 @11:00!

Updates – A quick recap for April 8, 2025

March 11, 2025:

- **Morbidity Updates**
 - Measles Update
 - HPAI Update
- **Environmental Health Contacts in Communication Events**
- **MAVEN Updates**
 - K Release Updates
 - MAVEN Race Variable
- **Featured Presentation: Infectious Disease Control and Prevention Overview**
 - Hillary Johnson, MHS, Senior Epidemiology Advisor to Local Health, Division of Epidemiology
 - Petra Schubert, MPH, Emerging Infections Coordinator, Division of Epidemiology



Presentation: [PDF Slides](#), [Recording](#)



Always Remember you can see recent webinar recordings and slides in MAVEN Help.

Bookmark the URL!

MAVEN Help: <http://www.maven-help.maventrainingsite.com/toc.html>

2025 Immunization Updates Series Coming!

The Immunization Updates - a series of immunization-related webinars for health care providers – announces 2025 dates:

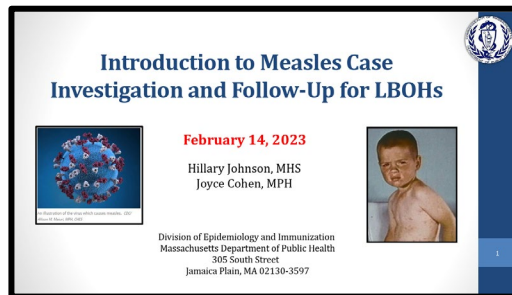
- 5/7 - Immunization 101
- 5/21 - Immunization Schedule Updates (two 45-minute webinars)
 - Register for the Pediatric session or the Adult session or both
 - Pediatric update at 11:30 a.m., followed by Adult update at 12:20 p.m.
- 5/28 - Epidemiology of Vaccine Preventable Diseases in Massachusetts
- 6/4 - Vaccine Confidence
- 6/11 – Massachusetts Immunization Information System (MIIS)
- 6/18 - VFC Compliance/Vaccine Storage and Handling (for your VFC certificate!)
- Registration to open in April.

All webinars are virtual, and will run from noon to 1 p.m., except where noted. To obtain your VFC Certificate now, [watch this video](#) and pass the post-test.

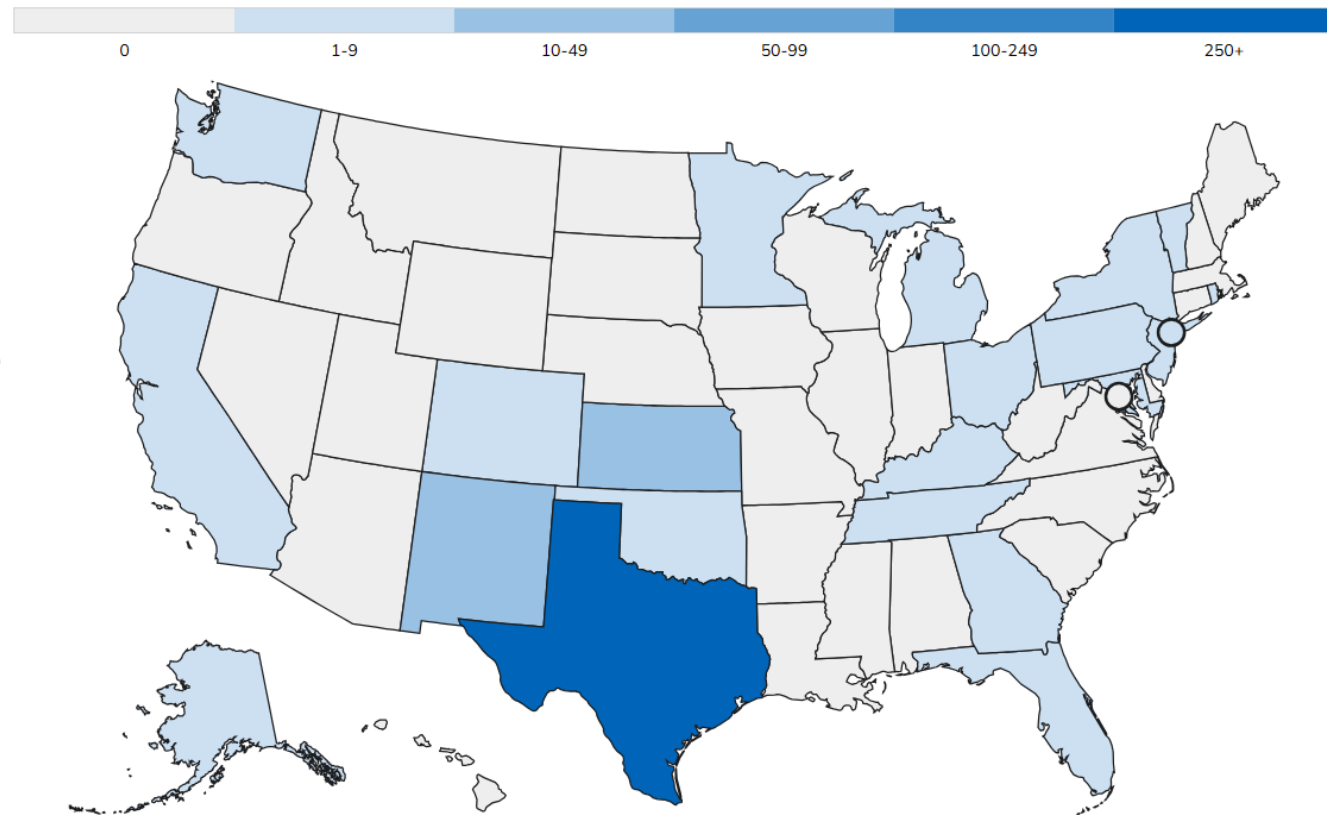
<https://www.mass.gov/info-details/immunization-division-events>

U.S. Measles Cases, 2025

- **No cases of measles in Massachusetts**
- As of April 3, 2025, a total of **607** confirmed measles cases were reported by 22 jurisdictions.
- There have been **6 outbreaks** (defined as 3+ related cases) reported in 2025, and 93% of cases are outbreak-associated.
- **2 confirmed deaths**, 1 currently under investigation in the U.S. in 2025.
 - All three deaths were among unvaccinated individuals.
- Measles training on MAVEN Help:

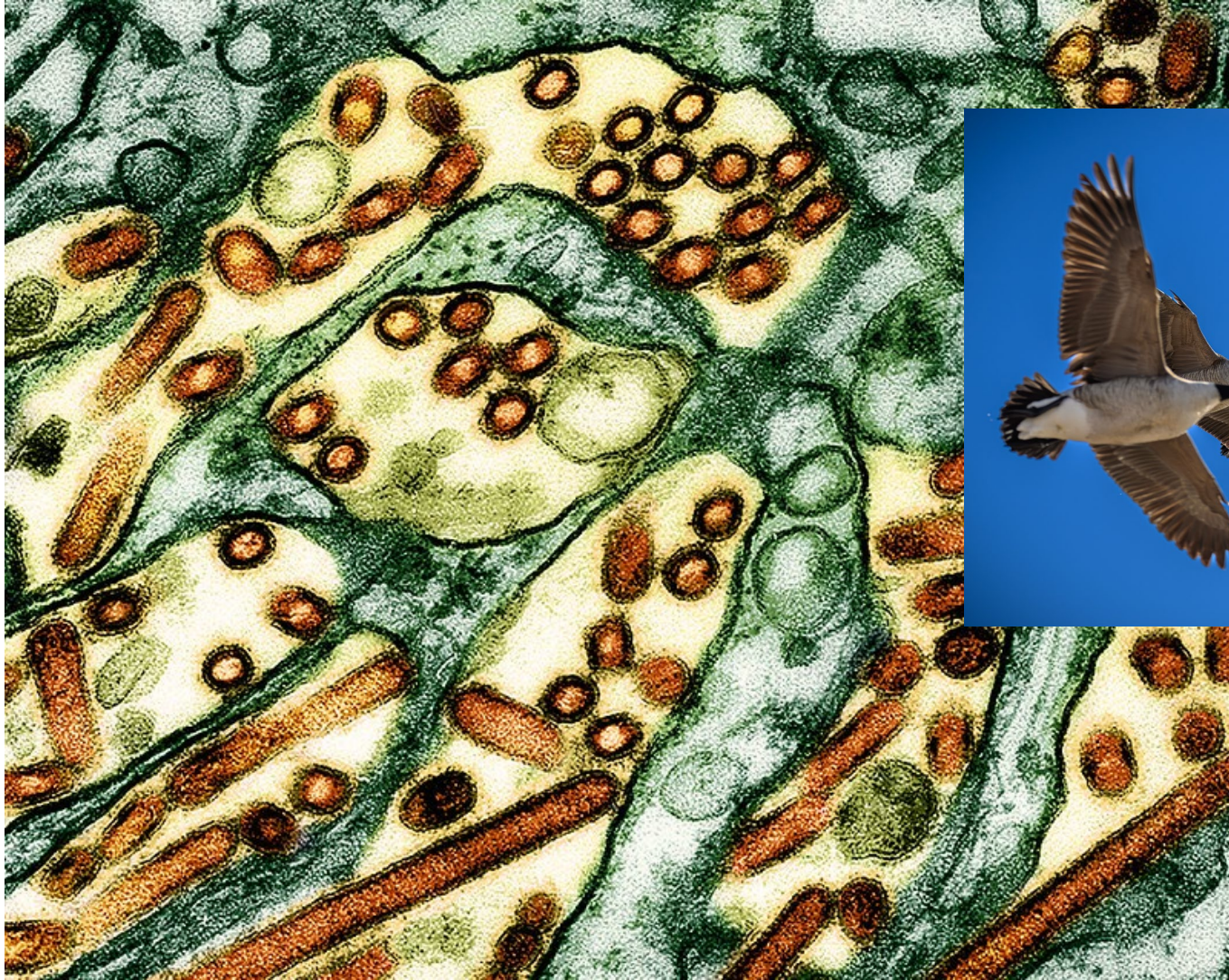


[Intro to Measles Case Investigation and Follow-up](#)



Data as of 4/3/2025. Source: <https://www.cdc.gov/measles/data-research/index.html>

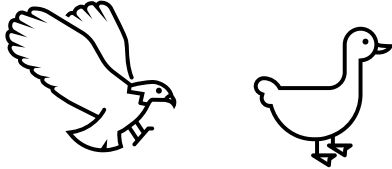
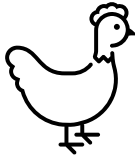
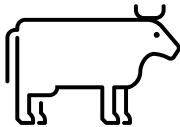
H5N1 Avian Influenza Updates



HPAI H5N1 Massachusetts, April 2025

- HPAI H5N1 remains primarily a Zoonotic Disease (animal to human)
- H5N1 human cases have been rare in the US and have been primarily associated with direct contact with infected commercial poultry or dairy cattle
- **No human cases have been identified in Massachusetts.**

HPAI Among Animals in MA, 2025

Wild Bird 	HPAI declining among wild birds (as temp. warms)
Domestic Birds 	2 backyard flock identified (as of 4/7)
Dairy Cows 	Milk supply from MA dairies remains negative. Milk is tested monthly.

<https://www.mass.gov/info-details/avian-influenza>

<https://www.cdc.gov/bird-flu/situation-summary/data-map-commercial.html>

U.S. H5N1 Cases in Humans, since 2024

Situation summary of confirmed and probable human cases since 2024

Confirmed Cases

Probable Cases

State or territory

National

National situation summary

Person-to-person spread

NONE

There is no known person-to-person spread at this time.

Current public health risk

LOW

The current public health risk is Low.

Cases in the U.S.

70 cases

Deaths in U.S.

1 cases

National Total Cases: 70

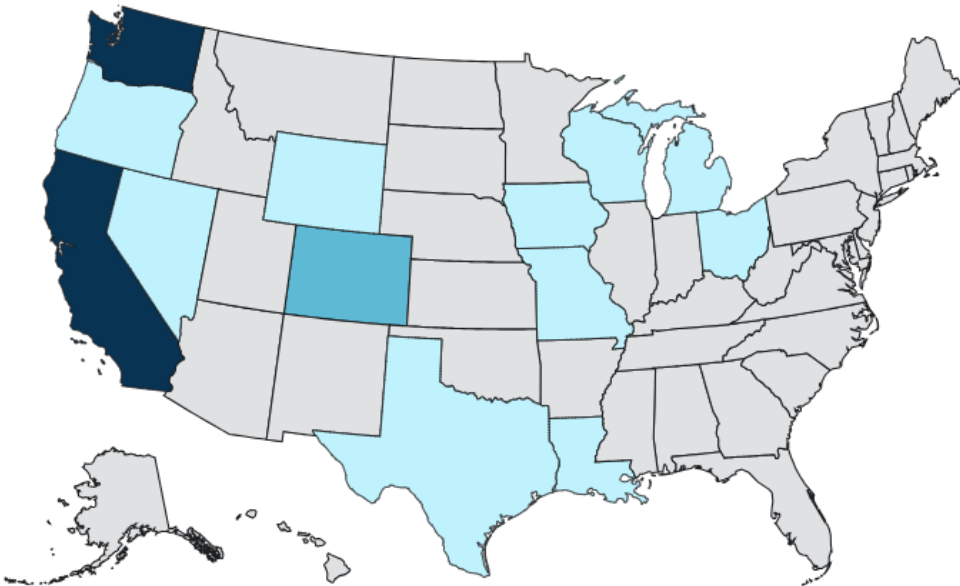
Cases	Exposure Source
41	Dairy Herds (Cattle)*
24	Poultry Farms and Culling Operations*
2	Other Animal Exposure†
3	Exposure Source Unknown‡

NOTE: One additional case was previously detected in a poultry worker in Colorado in 2022. Louisiana reported the first H5 bird flu death in the U.S.

*Exposure Associated with Commercial Agriculture and Related Operations

†Exposure was related to other animals such as backyard flocks, wild birds, or other mammals

‡Exposure source was not able to be identified



Total cases



Data as of 4/4/2025. Source CDC: <https://www.cdc.gov/bird-flu/situation-summary/index.html>

MAVEN Updates & Reminders



MAVEN Reminders for 2024 Case Closeout





2024 Case Closing

- **In Progress**, DSAI staff will complete any 2024 cases that remain in the workflows by completing steps 2, 3 & 4 in the Administrative Question Package. Staff will leave a note in any cases where question packages are updated.

*****Friendly Reminder** to check your Immediate, Routine, Pending Case Report Form Workflows for 2024 events today.



Quick MAVEN Reminders – what you will see in Notes

- If no steps are filled out in the event:

Notes  

Scott Troppy [stroppy] - (Generic) 02/05/2025 10:28 AM
Completing LBOH Steps 2, 3 and 4 - clearing out incomplete 2024 cases from the LBOH CRF Pending Review workflow. No investigation attempted or completed.

- If any steps are filled out in the event:

Notes  

Scott Troppy [stroppy] - (Generic) 02/05/2025 10:31 AM
Completing LBOH Step 4 - clearing out incomplete 2024 cases from the LBOH CRF Pending Review workflow.

QUESTIONS?

